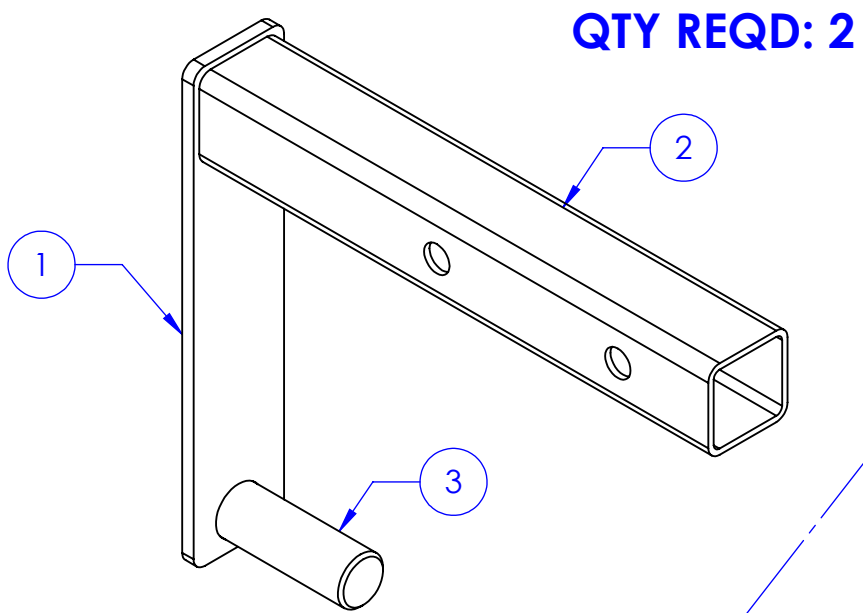
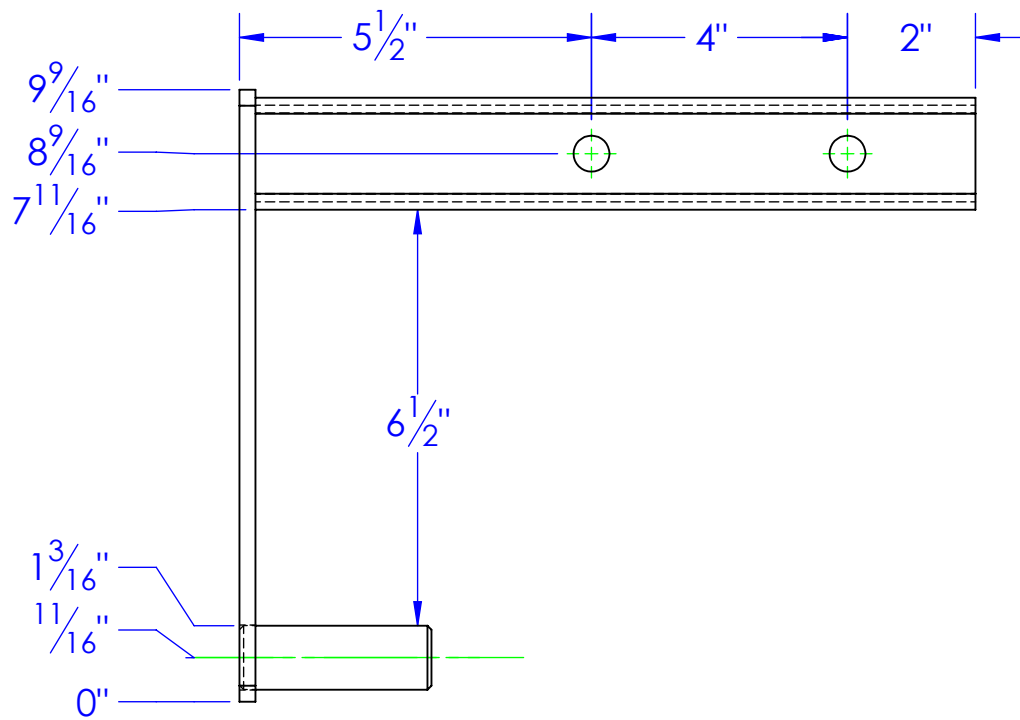
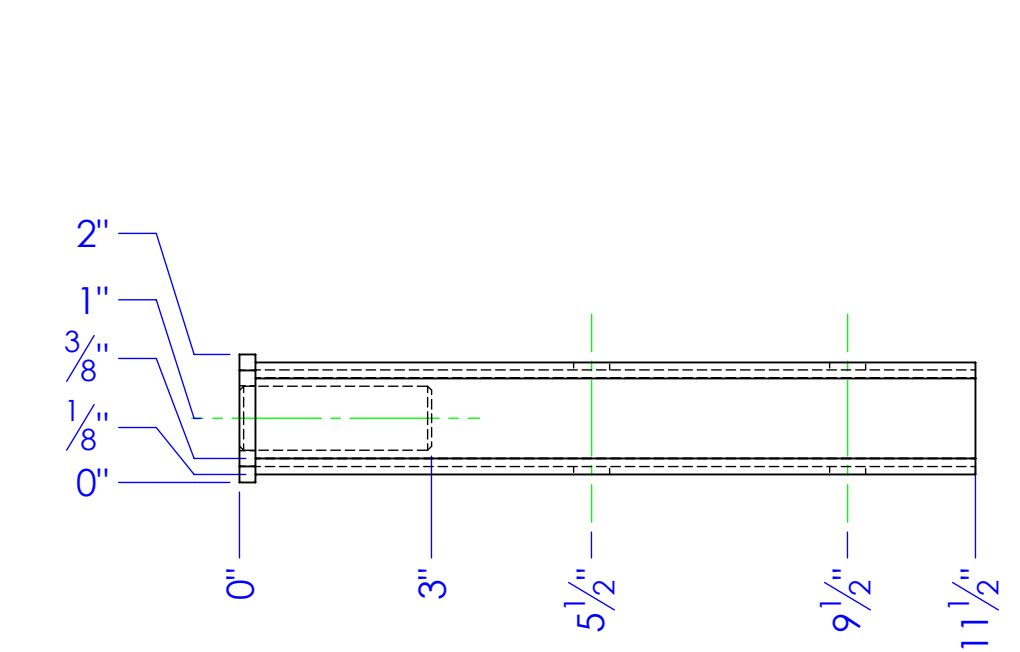
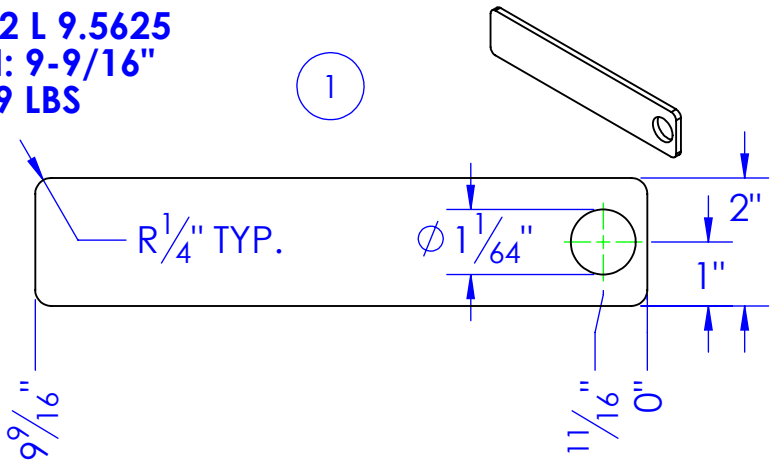


ITEM NO.	PART NUMBER	DESCRIPTION	MATERIAL	DRAWING #	QTY.
1	FI .25 X 2 L 9.5625	LENGTH: 9-9/16"	FI 1/4" x 2"	90-1500	1
2	ST 1.75x11ga. L 11.25	LENGTH: 11-1/4"	ST-1-3/4"x 11ga.	90-1500	1
3	STC-CR 1x4142 L 3	LENGTH: 3	CF ANN 4142 1RDx12	90-1500	1

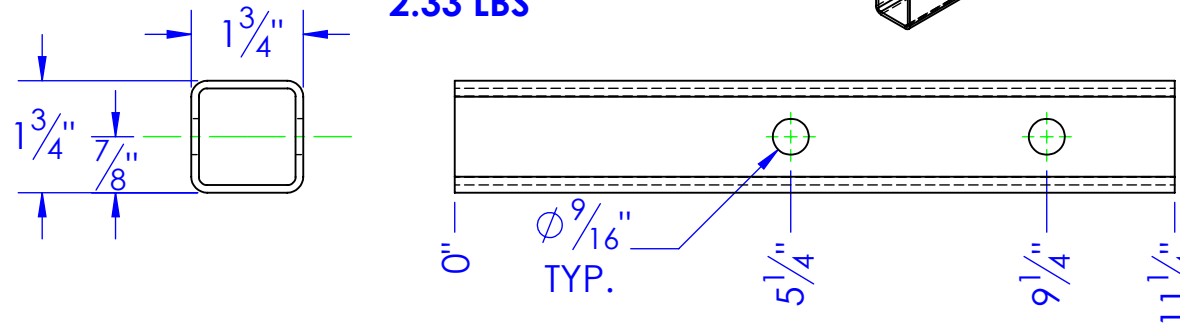
REVISIONS			
REV.	DESCRIPTION	DATE	APPROVED
A	REVISED TO NEW STANDARD DWG FROM DB2-13	11/20/2012	



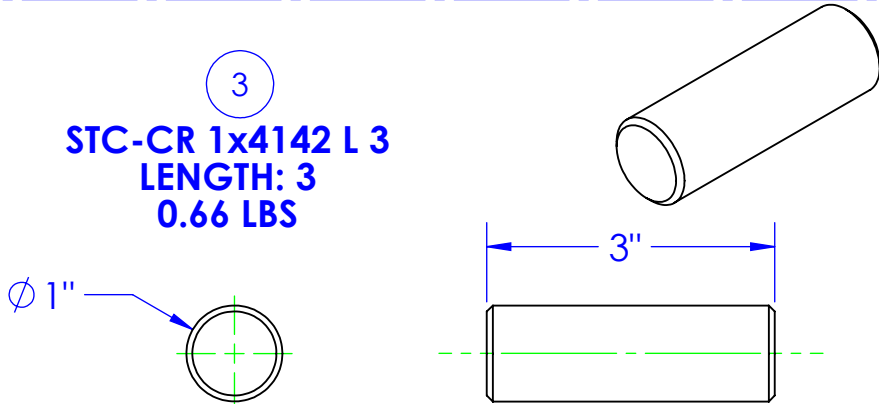
FI .25 X 2 L 9.5625  
LENGTH: 9-9/16"  
1.29 LBS



ST 1.75x11ga. L 11.25  
LENGTH: 11-1/4"  
2.33 LBS



STC-CR 1x4142 L 3  
LENGTH: 3  
0.66 LBS



PROPRIETARY AND CONFIDENTIAL  
THE INFORMATION CONTAINED IN THIS  
DRAWING IS THE SOLE PROPERTY OF  
<INSERT COMPANY NAME HERE>. ANY  
REPRODUCTION IN PART OR AS A WHOLE  
WITHOUT THE WRITTEN PERMISSION OF  
<INSERT COMPANY NAME HERE> IS  
PROHIBITED.

UNLESS OTHERWISE SPECIFIED:  
DIMENSIONS ARE IN INCHES  
TOLERANCES:  
FRACTIONAL  $\pm 1/16$   
ANGULAR: MACH  $\pm 1$  BEND  $\pm$   
TWO PLACE DECIMAL  $\pm 0.010$   
THREE PLACE DECIMAL  $\pm 0.005$   
MATERIAL  
DO NOT SCALE DRAWING

DRAWN	NAME	DATE	P.O. BOX 248, SABETHA KS. 66534 (785) 284-3674 FAX (785) 284-3931		
PART #	HEATH	4/15/2014	<b>TRIPLE C</b> INC.		
ASM #	FP-DB2-13				
COMMENTS:			SIZE	DWG. NO.	REV
KEEPER BAR DUMP BOX			B	90-1500	A
			SCALE: 1:3	WEIGHT: 4.29	SHEET 1 OF 1